

## Hydraulic Pool lift

Fixed adjustable hydraulic lift for pool, with low maintenance, with high safety features and adaptable to all pool surfaces.

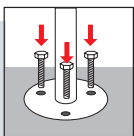
AB40LB111 / AB4XLB111

# ACCESSB4

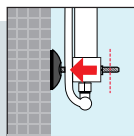
## ACCESSB4<sup>XL</sup>

- **Equipment recommended for seasonal pools.**
- **Fixed pool lift with an anchor** attached to the swimming pool.
- **Adaptable to all types of pools**, including non-overflowing ones. Its adjustable structure allows it to be adapted to different types of pool profiles.
- **Adjustable according to the depth** of the pool. Suitable for shallower pools.
- **Easy installation**, it only requires three stainless steel plugs, bolted to the pavement and three simple supports.
- **User friendly access.** Water-facing transfer with rigid footrest for greater comfort and safety of the user.
- **Maximum autonomy** for people with reduced mobility. Double operation system activated from the inside and the outside of the swimming pool to offer greater independence to the user.
- **Manufactured at Blautec** the structure is constructed in stainless steel AISI 316L and the seat is made of polypropylene, materials suitable for outdoor use.

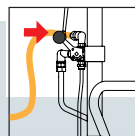
### ASSEMBLY INSTRUCTIONS



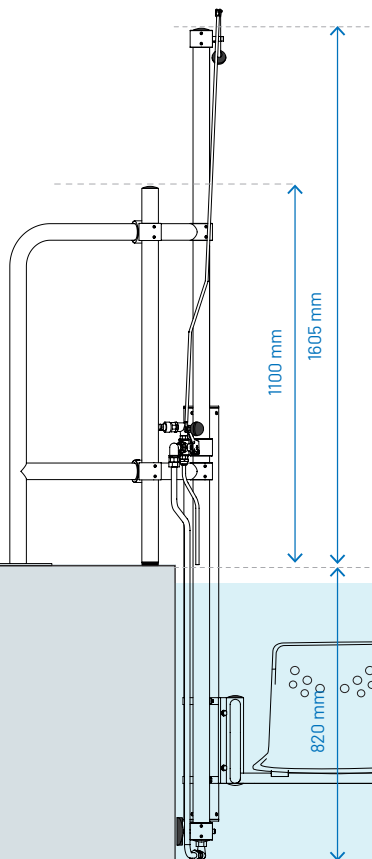
Present the pool lift, mark and drill the 3 holes.  
Ø 12-12,5 mm



Position the hoist and the earthing terminal.  
Adjust the lower stop.



Fit the water connection to supply the circuit.



### TECHNICAL DATA

Maximum lifting capacity: **120 kg**

Turning angle: **160°**

Required pressure: **3,5 a 5 bares**

Anchor arm: **355 mm / XL 655 mm**

Minimum depth: **800 mm**

Weight: **43 kg / XL 44,5Kg**

Dimensions: **2425 x 700 mm**

### EC DECLARATION OF CONFORMITY



We declare under our responsibility that the machine:  
Type: Hydraulic pool lift for people with reduced mobility  
Make: ACCESS  
Conforms to the essential Health and Safety requirements of the Directives: 98/37 CE "Máquinas"  
And is in conformity with harmonised European standards:  
UNE EN ISO 12100-1      UNE EN ISO 12100-2  
UNE EN 982              UNE EN 418  
UNE EN 1050             UNE EN ISO 10535